

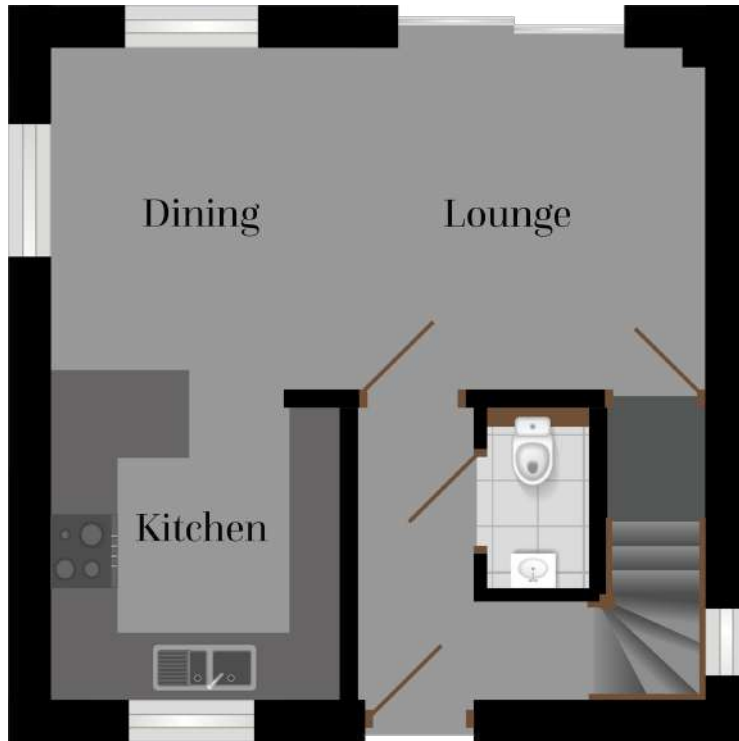
# The Crowgy

Kellan Close: 1  
Hidderley Park: 93, 95, 96, 101  
Vanner Close: 1

The Crowgy is a home designed with the individual in mind. Its symmetry, pitched roof and exterior mix of granite and render finishes make this a very attractive property. From the entrance and hallway, the house benefits from a downstairs WC, a contemporary kitchen and a large living room/dining room which overlooks the garden. The first floor has a master bedroom, a second double bedroom and a family bathroom.

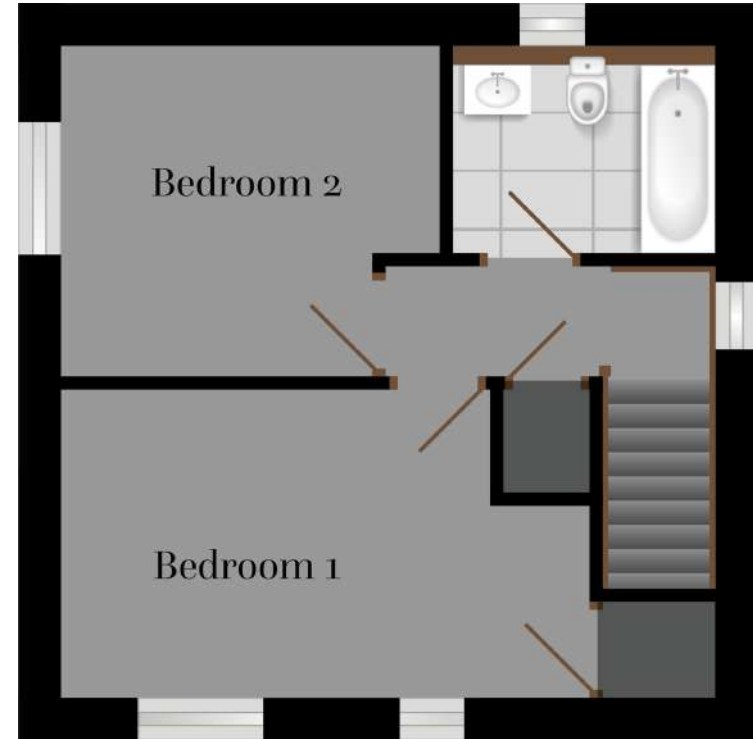


## GROUND FLOOR



Kitchen/Dining	2.67m x 2.78m	8.75ft x 9.12 ft
Lounge	3.82m x 5.85m	12.53 ft x 19.19 ft

## FIRST FLOOR



Bedroom 1	4.83m x 2.80m	15.84 ft x 9.18 ft
Bedroom 2	3.40m x 2.97m	11.15 ft x 9.74 ft

All measurements given are approximate, for further details please contact the agents. Dimensions given are done so in good faith and before construction has commenced. They are approximate and for guidance only and should not be used for furniture or appliance purchases. Purchasers are strongly advised to confirm actual dimensions when the property is nearing completion or is completed.